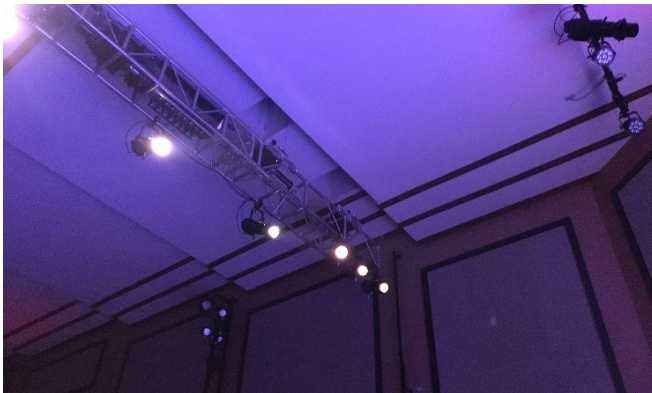




Appalachian Theatre of the High Country, Inc.

Facility Technical Information Packet



Venue: 559 West King Street
Mail: PO Box 11 DTS
Boone, NC 28607
828.865.3000
www.apptheatre.org



Updated 7.30.2022

*Equipment inventory is subject to change.
Confirm all technical needs with ATHC
staff well in advance of your event.*

General Information

Administration: Suzanne Livesay, Executive Director *slivesay@apptheatre.org*
George Antczak, Technical Director *gantczak@apptheatre.org*
Jason Deathridge, Patron Services Manager *jdeathridge@apptheatre.org*
Stacey Harris, Finance Director *sharris@apptheatre.org*
Sali Gill-Johnson, Booking Agent *booking@apptheatre.org*

Physical Address: 559 W King St, Boone, NC 28607
Mailing Address: PO Box 11 DTS, Boone, NC 28607
Business Office: 555 W King St, Boone, NC 28607

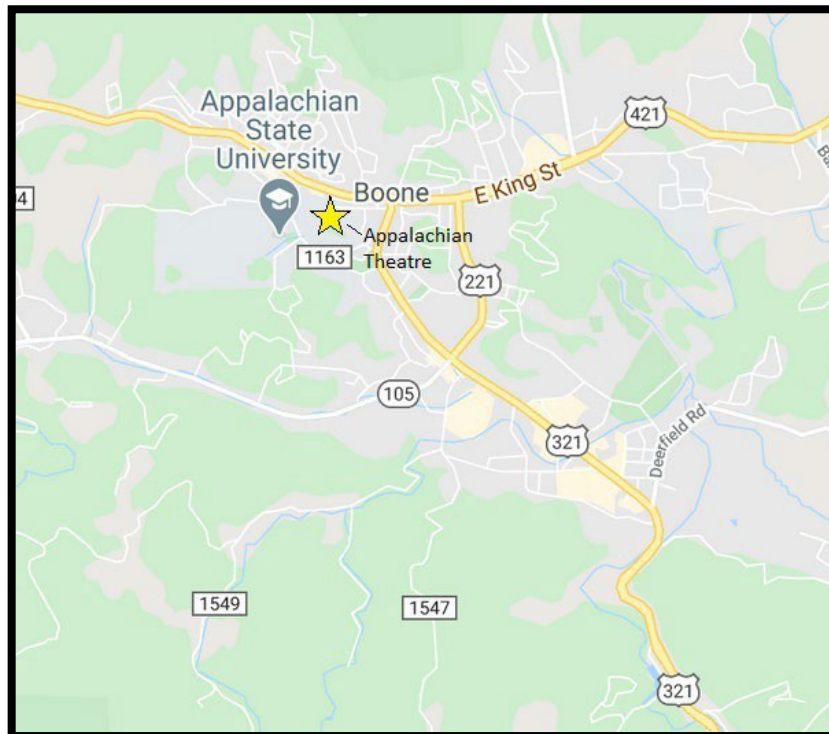
Office Phone: 828.865.3000
Website: apptheatre.org
General Email: info@apptheatre.org

Area Information

Downtown Boone, NC is located 10 miles west of the Eastern Continental Divide at 3,333 feet above sea level. While the climate is generally mild, local weather conditions can vary drastically from other weather in the region. Please be aware of local weather conditions when making travel plans and be prepared for high wind, fog, and unexpected rain/snow/sleet events. Visit booneweather.com for detailed and accurate local weather information.

Directions & Loading Dock

The Loading Dock is located on Howard St on the back side of the facility. Parking is available for standard vehicles in five numbered spaces. Alternatively, up to two 28-foot Box Trucks may also park in the loading dock. Larger vehicles such as semi-trailers or tour busses will need to make special arrangements. Larger vehicles may require alternate routing to allow for limited turning space in downtown Boone. Please coordinate all parking & load-in/load-out logistics with the Technical Director.

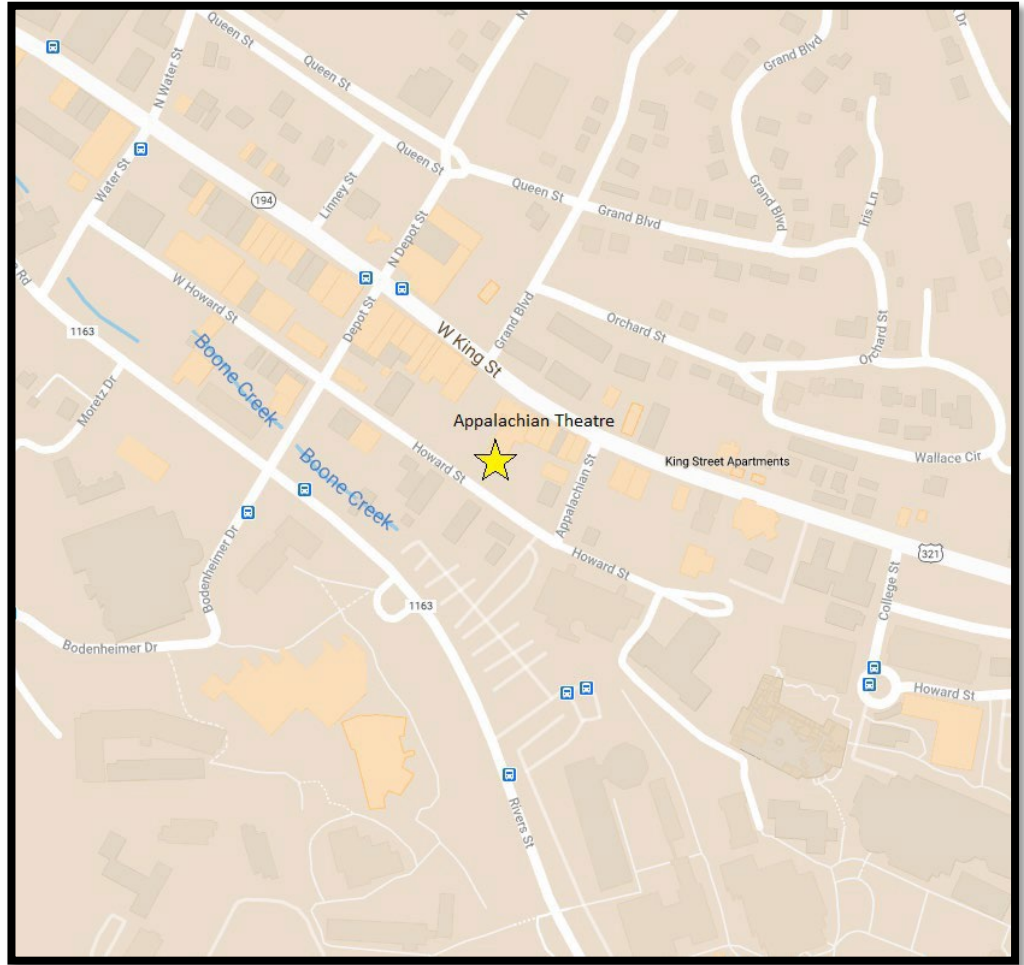




Appalachian Theatre

559 W King St
Boone, NC 28607

828.865.3000
apptheatre.org



From points East (via US 421)

- Take US 421 West through Wilkesboro, NC
- Once in Downtown Boone, Turn Left on Appalachian St
- Turn Right on Howard St
- Loading Dock is on Right Hand Side

From Points South (via US 321)

- Take US 321 North through Blowing Rock, NC
- Turn Left onto King St (US 421)
- Turn Left on Appalachian St
- Turn Right on Howard St
- Loading Dock is on Right Hand Side

From points West (via US 421)

- Take US 421 East from Tennessee border
- Once in Downtown Boone, Turn Right on Depot St
- Turn Left on Howard St
- Loading Dock is on Left Hand Side

***Between Lenoir, NC and Blowing Rock, NC there are some very steep and curvy sections of US 321, particularly closer to Blowing Rock. Sudden adverse weather events such as heavy fog, wind, and rain/sleet/ snow can cause dangerous travel conditions. Please be cautious and consider an alternate route during severe weather events.**

Visit booneweather.com for detailed and accurate local weather information.



Loading dock facing North from Howard St

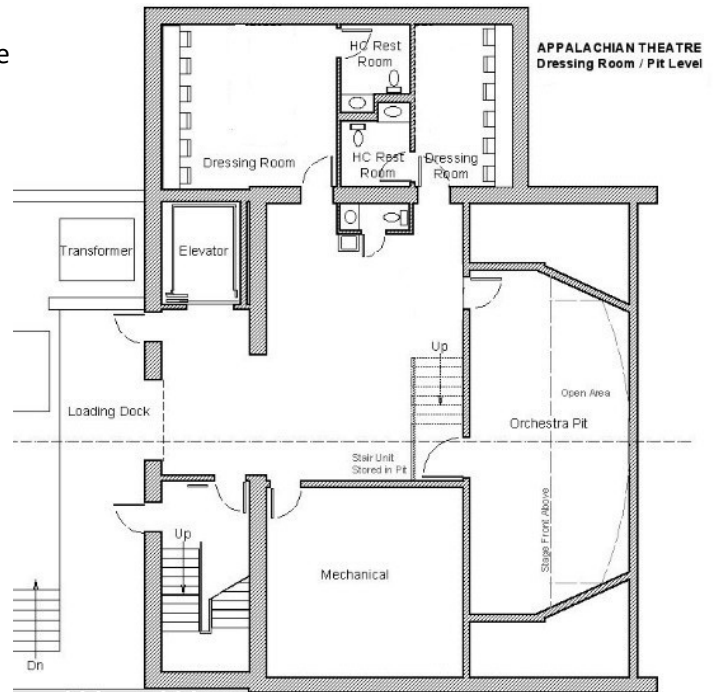
Stage Layout and Dimensions

Load-In Access

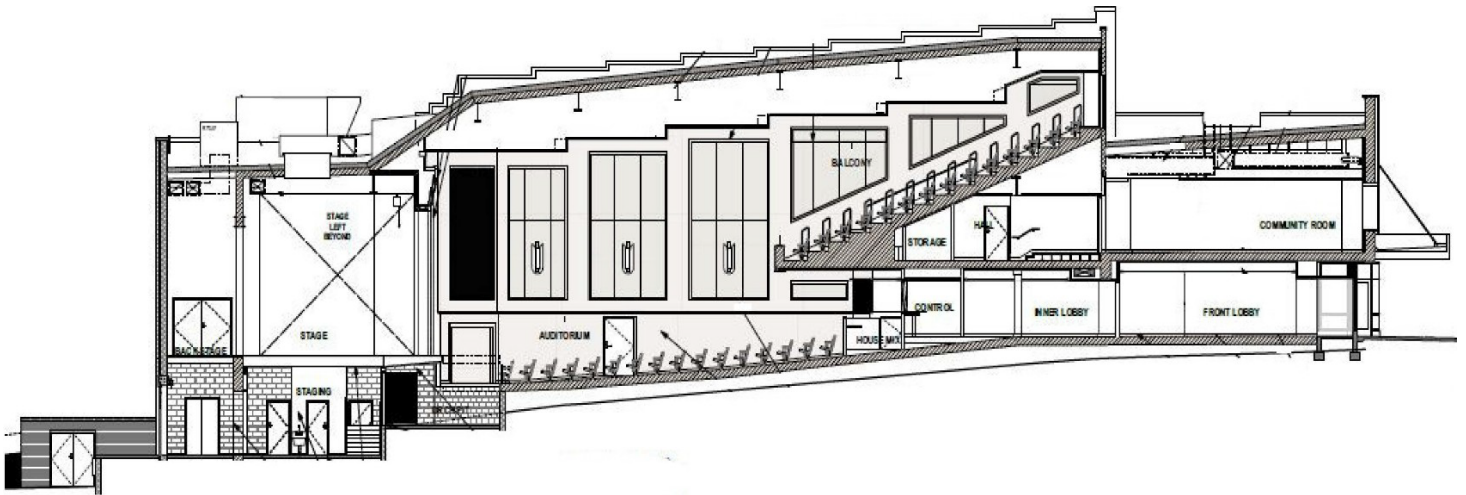
- Loading Dock accessible for up to 28' Box Truck (2 Bays, 47" dock height)
- Semi-trucks may load/unload on Howard Street accessible to loading dock via ramp
- 8'x8' roll-up door to 1st floor basement/Green Room
- Stage accessible via 89"x 64"x 107" elevator (5,000 lb. cap.)
- Elevator door is 48" wide by 84" tall
- Any cases or set carts cannot be taller than 78 3/4" to access stage

Critical Dimensions

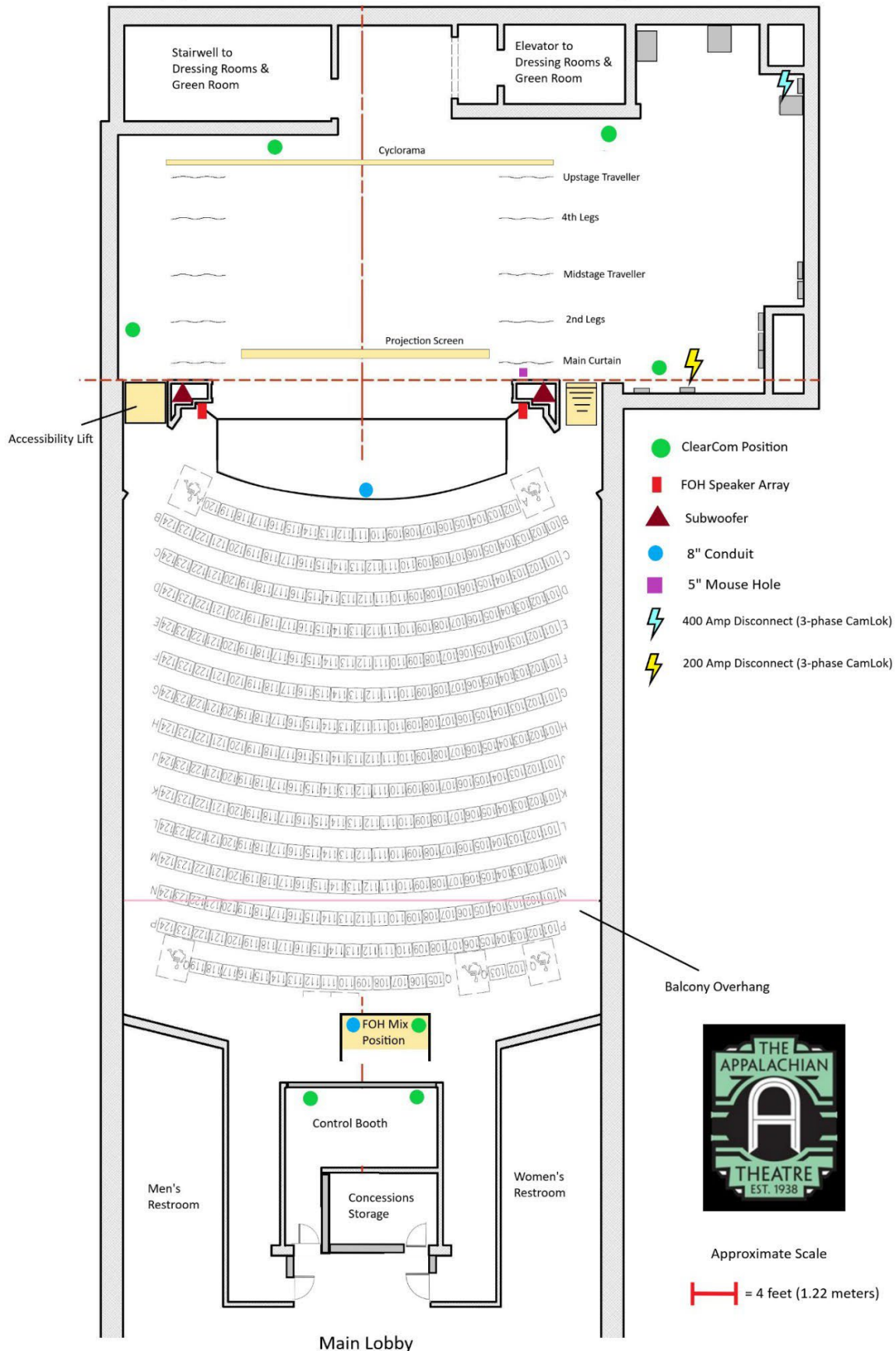
- Proscenium Height: 18' 0" (5.486m)
- Proscenium Width: 29' 0" (8.839m)
- Maximum Main Curtain Opening: 26' 6" (8.077m)
- Valance & Border Clearance: 15' 7" (4.724m)
- Orchestra Pit to Stage Floor: 8' 8" (2.642m)
- Auditorium @ Row A to Stage Floor: 3' 4 1/2" (1.029m)
- DS Edge of Pit Cover @ CL to Plaster Line: 12'0" (3.658m)
- Fixed Apron to Plaster Line: 3' 9" (1.143m)
- Plaster Line to Midstage Traveler: 10' 2" (3.099m)
- Plaster Line to Upstage Traveler: 19' 8" (5.994m)
- Plaster Line to Cyc: 20' 8" (6.299m)



Auditorium/Building Side View



Appalachian Theatre of the High Country



Audio System

The Appalachian Theatre features a state-of-the-art Renkus-Heinz ICL-F-Dual-RD Live Array System with IC215S- R dual 15" subwoofers per side. The system is controlled by via Dante protocol using either or both SQ7 & SQ5 Consoles. Two Allen & Heath DT168 Drive Racks can be positioned on stage. Up to 48 input channels and 8 output channels are available in the standard configuration. Six Yamaha DZR12 speakers can be used a floor wedges and up to two can be placed on 6ft tripod stands as needed.

Microphone Inventory

- 4x SM58
- 4x Beta 58
- 4x SM57
- 4x PCC 160 boundary
- 1x sE V-Kick
- 3x sE V-Beat
- 2x sE8 overhead condenser
- 1x sE V7X
- 2x Shure BLX Wireless SM58s
- 2x Sennheiser e835 Wireless Handhelds (may be substituted for Countryman B3 Lavalier units)

Cables & Stands

- 6x 5' XLR
- 25x 25' XLR
- 4x 50' XLR
- 2x 100' XLR
- 2x 10' 1/4" TR
- 2x XLR M/M adapter
- 2x XLR F/F adapter
- 8x 25' Edison
- 4x 5' Edison
- 4x Edison 8-way box
- 10x Tall tripod stands
- 4x Short tripod stands
- 14x adjustable booms
- 6x round base table stands
- 2x 50' 12/4 XLR snake
- 1x 50' 8 channel XLR snake

Additional Features

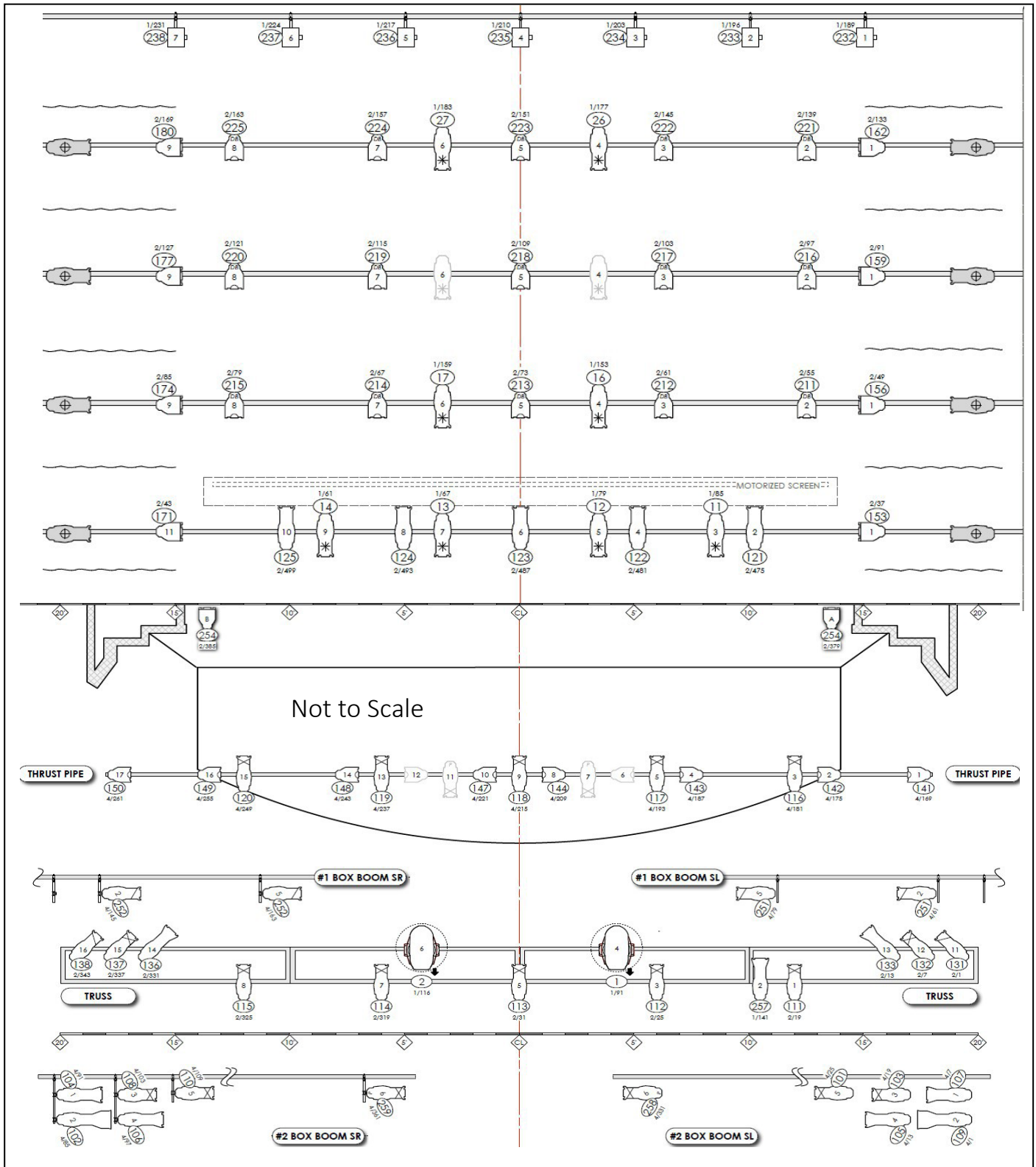
- Intercom is available via ClearCom HelixNet digital system can be configured for up to 4 channels. Additional intercom ports in lobby box office & orchestra pit.
- Paging system and program feed can be distributed via moveable stage manager console to green room, dressingroom, lobby box office & control both.
- Hardline XLR returns from either side of stage to FOH mix position (6 per side).
- An 8" conduit runs from the FOH mix position to the orchestra pit. There is also a 5" "mousehole" on stage left for additional cable runs.
- Music and sound cues can be loaded onto the Mac Mini located in the tech booth which features QLab version 4 with full audio and video license.
- 1/8" stereo input to audio system available at stage manager console.



The two main PA stacks are positioned on either side of the proscenium, each with an array of 10 individually steerable cone transducers and 6 compression drivers. This allows for even coverage while minimizing acoustic reflection producing a clear, undistorted sound throughout the auditorium.

Lighting System

The Appalachian Theatre lighting system is composed entirely of ETC LED fixtures. There are 53 ColorSource Spots, 49 ColorSource PARs and 2 ETC Releves (moving lights) in the standard rep plot each driven by a 4-color LED array. There are an additional 2 ColorSource Spot Pearls that may be used for custom Gobo patterns. The lighting system is controlled from the booth using an ETC Ion XE console.



Lighting Continued

Because the system is designed to optimally light the performance space, we strongly prefer not to make adjustments to the rep plot, particularly for the FOH positions.

The exception to this are the 8 overhead specials which include drop in Irises positioned over stage. These units are available with 19, 26, 36 or 50 degree lens tubes. Additional DMX and Net3 ports are available at all lighting positions. Power is available via non-dimmable stage-pin outlets.

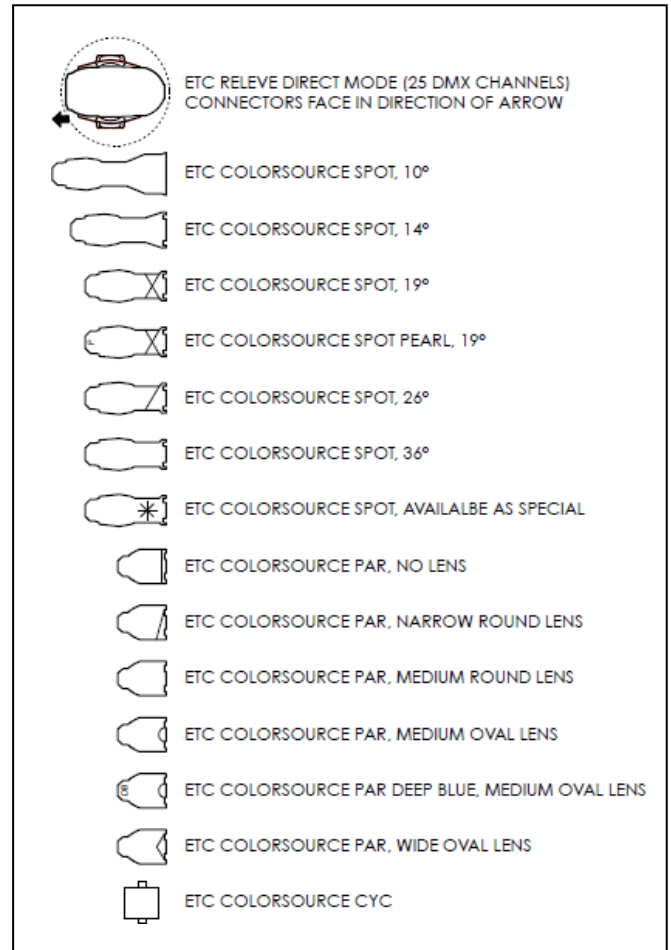


House Wall Sconces

Six Art Deco style architectural lighting sconces installed in the 1950s era theatre are mounted on the lower audience level of the auditorium.

Each is individually DMX controlled and retrofitted with a RGB LED array.

Legend



Video & Projection

The Appalachian Theatre is a fully equipped movie house featuring a Draper Paragon 177" x 284" retractable screen located 4 feet upstage of the proscenium. A Panasonic 6500 lumen LCD Laser Projector is optimally positioned in the tech booth.

Content can be driven either using the Denon DVD/SD/BluRay playback system or from any video file format compatible with QLab software. A Mac Mini with QLab version 4 with full audio & video license is available in the tech booth.



Rigging

The Appalachian Theatre is a strictly dead-hung house with the exception of the front-of-house truss position. There is an overhead pipe grid 19 feet above the stage and adjacent wing space. There is also a thrust pipe above the orchestra pit and a balcony rail pipe extending the full width of the auditorium.

Any rigging and/or overhead objects must be approved in advance by the Technical Director. Rigging and overhead hanging work must be performed by qualified ATHC staff only unless otherwise approved.



Rigging Load Limits

- Pipe grid above stage...100 lbs per linear foot
- Thrust Pipe..... 100 lbs per linear foot
- Balcony rail 50 lbs per linear foot
- FOH Truss 2,200 lbs including lighting

FOH Truss

The FOH Truss position is a 40 foot wide 20 ½” x 20 ½” box truss equipped with a motorized hoist. The structure can be raised to a maximum trim height of 25 feet above the auditorium floor and can support up to 2,200 lbs including the default theatrical lighting fixtures. Tie-ins to the audio Dante network are available via up to 3 ether ports.

Lift Options

Genie AWP-25S

The AWP-25S is a single-person aerial personnel lift which allows access to overhead lighting and rigging positions. The lift can access the overhead areas above the stage and orchestra pit. Please note part of the thrust pipe extends beyond the edge of the orchestra pit and cannot be accessed using the Genie.

Ladder Frame Scaffold System

Because of the rake of the lower auditorium area a specialized scaffold system must be erected to access any overhead positions. The scaffold is built from a standard 5’ wide x 7’ long frame and can be built in 5-foot sections for a maximum platform height of 24 feet. The frame is sufficiently wide as to straddle exactly two rows of seats and is mounted on adjustable socket jack casters to maintain a level working surface.

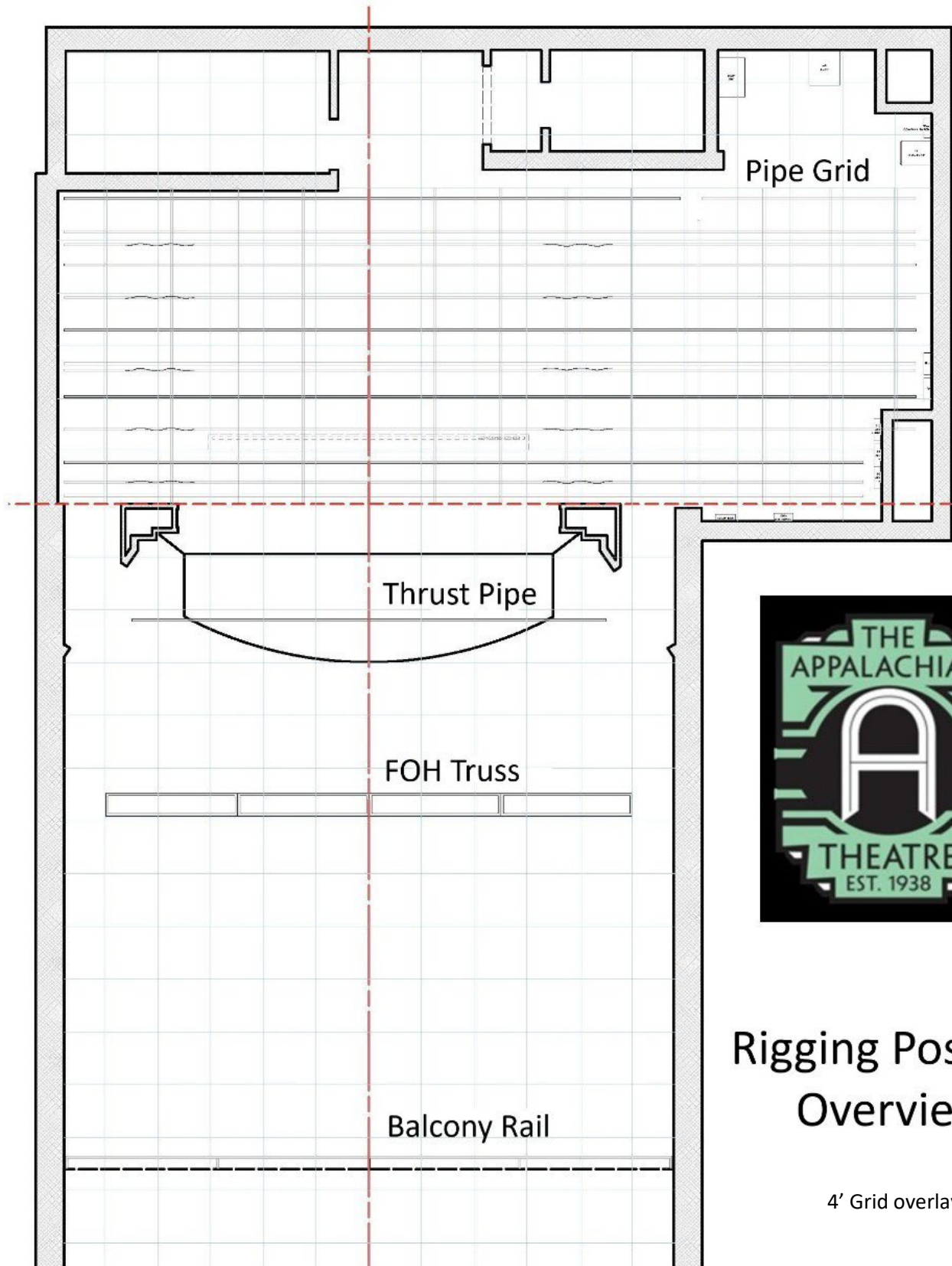


Only Appalachian Theatre staff operate the genie lift and scaffolding system. Qualified personnel may be allowed to access rigging and lighting positions with the permission of the Technical Director and under the supervision of the ATHC staff.

Power Distribution

Standard 20-amp Edison outlets are available throughout the auditorium and backstage dressing room area. Additional 20-amp outlets with isolated ground “clean power” are marked with an orange triangle and located at the FOH mix position, tech booth, orchestra pit, balcony rail and around the stage. There are two 3-phase CamLok disconnect panels (400 amp & 200 amp) are located on stage left; CamLok feeder cables are not available on-site and must be provided by the client.

ATHC Rigging Overview



Rigging Position Overview

4' Grid overlay

Additional Equipment

Yamaha C7X SH2 Grand Piano

The Yamaha C7X SH2 is a 7' 6" foot 88-key Grand Piano equipped with a unique silent mode feature. This features an optional dampening system which allows the piano to function as a digital keyboard. In either mode, the piano outputs a MIDI signal which can be converted using either the internal presets or an external MIDI device, or both. The Yamaha C7X is permanently stored on stage and cannot be moved to another location. Use of the piano must be coordinated in advance with the Technical Director.



Yamaha C7X SH2 Acoustic Grand Piano Features:

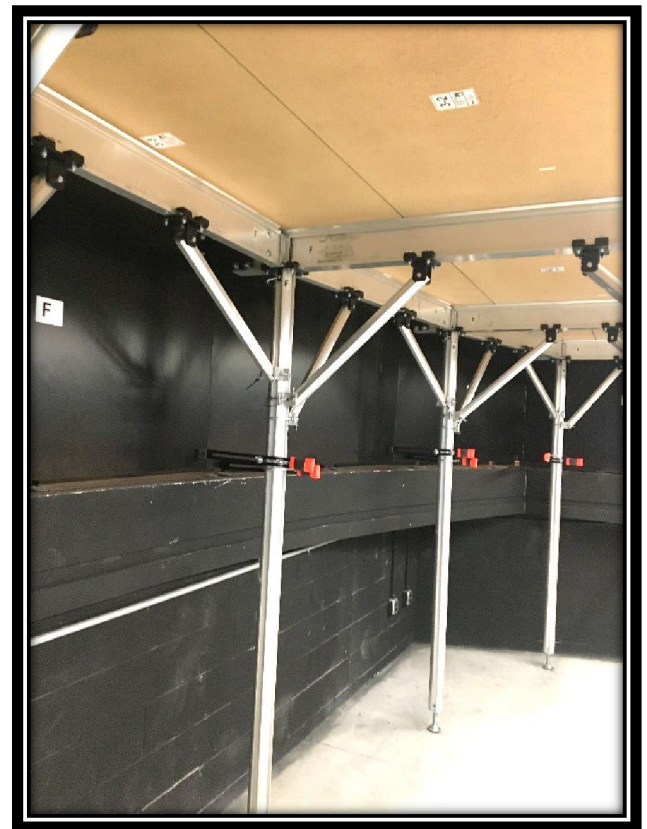
- Piano voice is binaurally sampled Yamaha CFX piano
- Four types of digitally controlled piano effects maintain the characteristics of acoustic performance
- 19 voices including electric pianos, organs, and more
- Onboard metronome for precise practicing
- 256 notes of polyphony for huge sound
- 53 onboard songs - 50 to play along to, 3 exhibit the sonic abilities
- Two recording systems - Built-in recorder and USB audiorecorder
- MIDI I/O for application interfacing or using piano as MIDI controller
- Auxiliary input let you jam along to tracks on any 1/8"-equipped device

Wenger Strata Pit Filler

The downstage thrust area is covered by a Wenger Strata pit filler system. The floor consists of an array of 4" thick panels sitting atop an adjustable scaffold. The default level for the pit filler is at stage level (105 inches above pit floor), but it can also be set to audience level (61 inches above pit floor) or removed entirely.

Additional stage accessories:

- 8x 72"x30"x29" Rectangular tables
- 10x 60" Round Tables (29" tall)
- 6x 29" Wooden Stools, Black
- 60' of 8' Tall Black Pipe & Drape
- 25x Hercules Series 880 lb black, armless chairs (17" tall)



All equipment must be requested in advance and subject to approval by the Technical Director.

View from underneath pit filler

Stage Diagram

